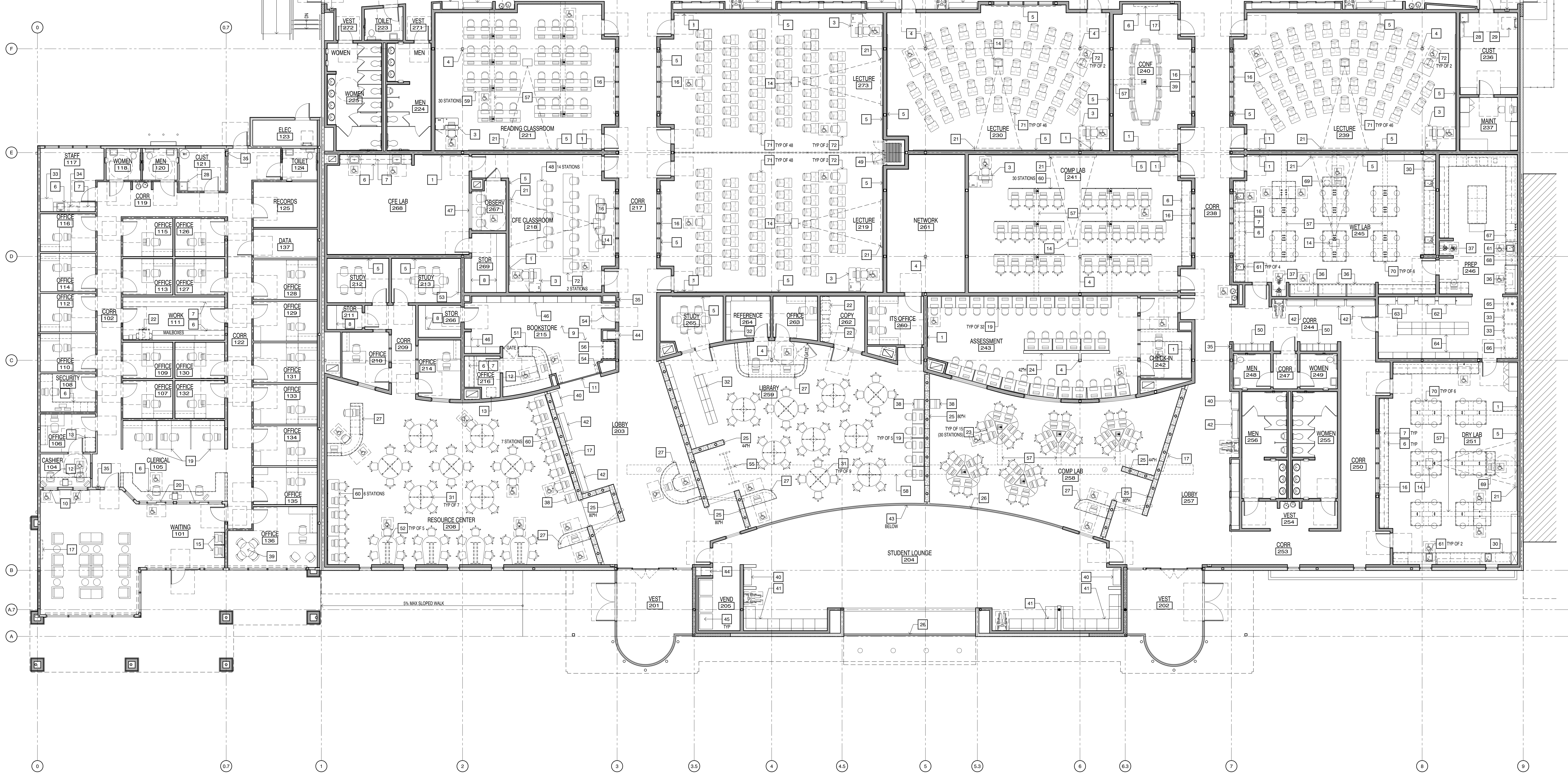


FURNITURE PLAN KEYNOTES

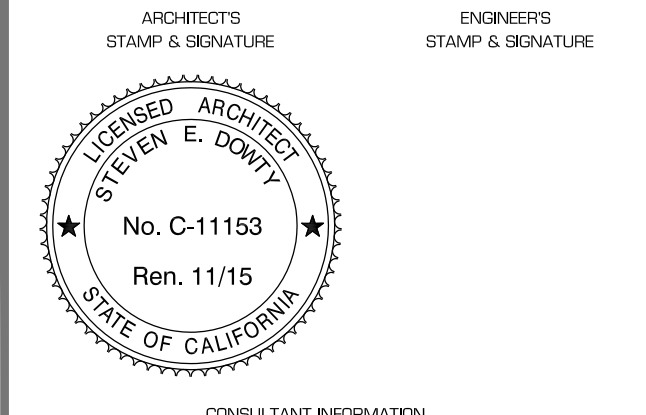
- 1 TACK BOARD (COPR)
- 2 ELEC POWER & DATA FEED FROM WALL, TYP
- 3 INSTRUCTOR STATION
- 4 (E) STEEL COLUMN, EXPOSED
- 5 MARKER BOARD
- 6 BASE CABINETS, TYP
- 7 WALL CABINETS, TYP
- 8 FULL-HI ADJUST SHELVES
- 9 METAL FIXTURES (INC)
- 10 FREE TRANSACTION WINDOW w/ BULLETPROOF GLASS
- 11 OVERHEAD COILING SECURITY DOOR
- 12 BUILT-IN CASHIER STATION w/ CASH DRAWER
- 13 SAFE w/ SECURITY CAMERA (INC)
- 14 SUPPORT BRACKET FOR GLG MOUNTED VIDEO PROJECTOR
- 15 STAND-UP COMPUTER STATION (INC)
- 16 HIGH WINDOWS w/ MOTORIZED SHADES
- 17 WALL-MOUNTED MONITOR (INC)
- 18 HELOW COUNTER
- 19 COMPUTER WORKSTATION (INC)
- 20 SLIDING TRANSACTION WINDOW
- 21 MOTORIZED PROJECTION SCREEN
- 22 COPIER w/ FAX/PRINT CAPABILITY (INC)
- 23 TRAPEZOIDAL COMPUTER TABLES (INC)
- 24 PARTIAL HEIGHT FRAME WALL w/ SOLID SURFACE CAP
- 25 PARTIAL HEIGHT STONE & MESH GABON WALL ON PH COLORED CONC CURB
- 26 TRANSLUCENT WALL
- 27 CHECK DESK
- 28 MDF SINK
- 29 ROOF OR ATTIC HATCH & LADDER
- 30 MEDIA CABINET w/ VENTILATED DOORS
- 31 READING TABLE (INC)
- 32 BOOK/MAGAZINE STACKS
- 33 MICROWAVE (INC)
- 34 REFRIGERATOR (INC)
- 35 FIRE EXTINGUISHER IN RECESSED CABINET
- 36 FLUME HOOD w/ CUP SINK
- 37 EMERGENCY EYEWASH & SHOWER w/ DRINK
- 38 MEDIA PRINT STATION (INC)
- 39 CONFERENCE TABLE (INC)
- 40 3-STREAM TRASH/RECYCLING RECEPTACLE
- 41 BUILT-IN SEATING w/ FABRIC CUSHIONS
- 42 METAL BENCH
- 43 COLORED CONC CURB
- 44 ATM (INC)
- 45 VENDING MACHINES (INC)
- 46 BUILT-IN WALL SHELVES
- 47 WINDOW w/ ONE-WAY GLASS
- 48 24" x 72" TABLE w/ 2 CHAIRS (INC)
- 49 OPERABLE PARTITION w/ STORAGE POCKET
- 50 MET LOCKERS w/ ELECTRONIC CODE LOCK (800A-1870-200A)
- 51 GLASS TOP DISPLAY COUNTER
- 52 COLLABORATIVE TABLE w/ MONITOR (INC)
- 53 (E) SMART BOARD TO BE RELOCATED
- 54 SECURITY SYSTEM AT BOOKSTORE ENTRY (INC)
- 55 SECURITY SYSTEM AT LIBRARY ENTRY (INC)
- 56 COOLER CASE - 42W x 30D MAX (INC)
- 57 UTILITY TRENCH IN (E) CONC SLAB
- 58 (E) ELEC DUCT BANK IN (E) CONC SLAB
- 59 "HEADWAY" COMPUTER TABLES (INC)
- 60 COMPUTER TABLE w/ WIRING TRAY (INC)
- 61 EPOXY RESIN LAB SINK w/ EYEWASH
- 62 45 GAL FLAMMABLE STORAGE CABINET
- 63 45 GAL CORROSIVES STORAGE CABINET
- 64 TALL OPEN STORAGE CABINETS
- 65 ICE MAKER (INC) w/ COLD WATER CONNECTION & FLOOR DRAIN
- 66 148 GAL CHEST FREEZER (INC)
- 67 DISHWASHER
- 68 STILL (INC)
- 69 BUILT-IN INSTRUCTOR STATION w/ MICROSCOPE
- 70 SCIENCE TABLE w/ STORAGE BELOW
- 71 (A) OR (E) SLEDS/TYPIE STUDENT DESKS (INC)
- 72 24" x 36" ADA TABLE w/ CHAIR (INC)



KRUGER BENSEN ZIEMER ARCHITECTS, INC. AIA
 30 W. ARPELLA STREET SANTA BARBARA, CA 93101
 TELEPHONE (805) 963-1726 FAX (805) 963-0561

STEVEN E. DOWDY, AIA
 PRINCIPAL ARCHITECT
JULIE K. WENDT
 PROJECT MANAGER

All design, design arrangements and plans indicated or cross-sections herein are intended to be used only as a guide for construction. All construction shall be in accordance with the applicable building codes and all other applicable laws, regulations, codes and standards. The contractor shall be responsible for obtaining all necessary permits and for coordinating with the applicable agencies. The contractor shall be responsible for obtaining all necessary permits and for coordinating with the applicable agencies. The contractor shall be responsible for obtaining all necessary permits and for coordinating with the applicable agencies.



CONSULTANT INFORMATION

DATE STAMP & SIGNATURE

REVISION	DESCRIPTION	DATE	BY
1	ISSUED FOR PERMIT	03/12/2015	JKW
2	CHECKED	03/12/2015	SD
3	DRAWN	03/12/2015	JKW
4	TITLE	03/12/2015	JKW

SHEET TITLE FURNITURE PLAN
 SHEET NO. 14-007
 DATE 03/12/2015
 CHECKED SD
 DRAWN JKW
 REVISION DESCRIPTION DATE BY

1 Furniture Plan
 SCALE: 1/8" = 1'-0"

